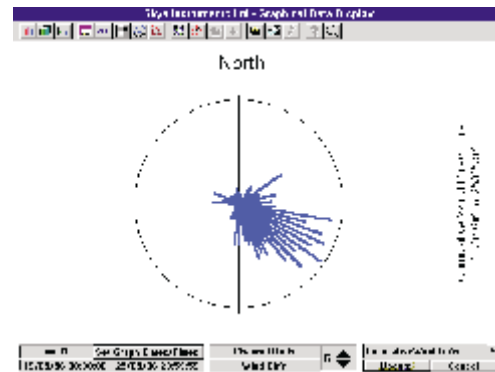
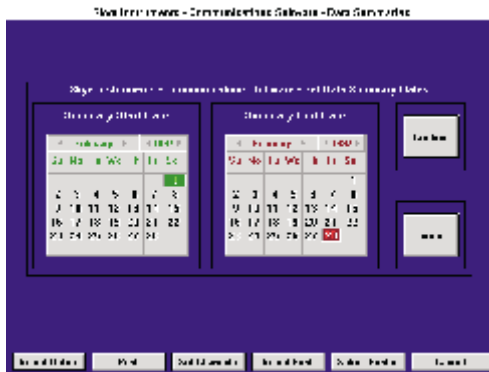




MINIMET

WizzCom

Windows based Graphical Communications Software
FOR SKYE DATAHOGS, MINIMETS AND HYDROSENSES



WIZZCOM Windows based Graphical Software is available for the Skye DataHog and MiniMet loggers (versions 1 and 2), and the HydroSense logging meter. It is compatible with Microsoft Windows versions 3.1 and above. This optional software enables users to offload the loggers and manipulate the data collected using just a few clicks of the mouse button, which greatly simplifies the operating procedures and uses the familiar Windows pull down menu formats.

All newly ordered instruments are still provided ready-to-use with SkyeLynx Standard Windows Communications software, for setting up of the logger parameters and offloading datafiles. These files can be used with commercial

spreadsheets for specialised calculations, graphing and tabulating as usual.

The **WIZZCOM** program has a fast offload option for DataHog 2 and MiniMet loggers, downloading a full memory of data in just 2 minutes. This gives significant savings in both user time and battery power. Offloading data from the DataHog 1 and HydroSense is also automated, saving files at the click of a button.

'Live' sensor readings can be displayed as digital meter type graphics, and historical data is easily produced using the calendar start / end date and time window as shown above. Graphs and tables can then be printed, via

Windows, using the printer drivers already installed your PC.

Graph options include normal line charts, a wind direction rose (as shown above), daily totals of rainfall, degree days, megajoules per day or sunshine hours. Summary tables give maximum, minimum, mean and total values for each time period selected.

ORDER CODE:

ACC/15 - WIZZCOM Graphical communications package

